

# How To Measure Your Kitchen

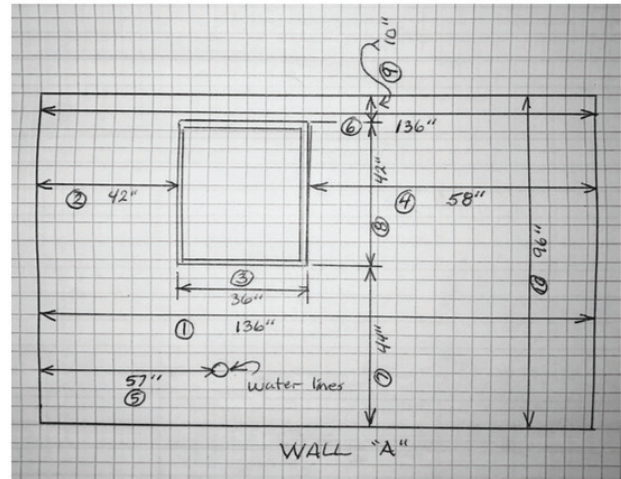
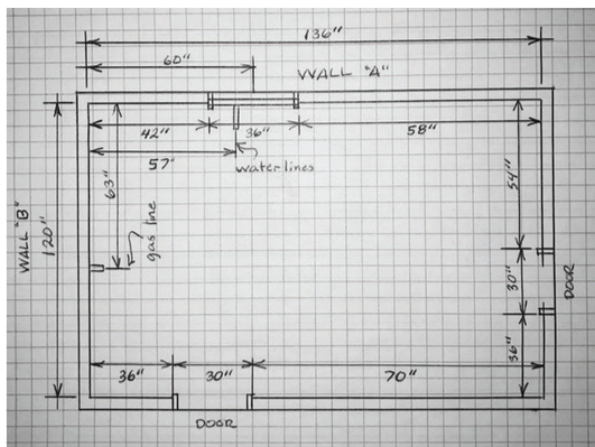


Customers are responsible for providing accurate measurements of their kitchens. We recommend that that your installer measure for you before you place your order.

## FLOOR PLAN

Before any planning can start, you must know the exact dimensions available to work with. Using the measuring procedure illustrated, carefully prepare a simple floor plan of your existing space.

Your completed floor plan should resemble the diagram shown below. Make sure you show the exact locations of doors, windows, hood vent exhausts, gas and water lines, drains, switches, outlets, light fixtures, and heat vents. Double check all measurements.



### Vertical Measurement

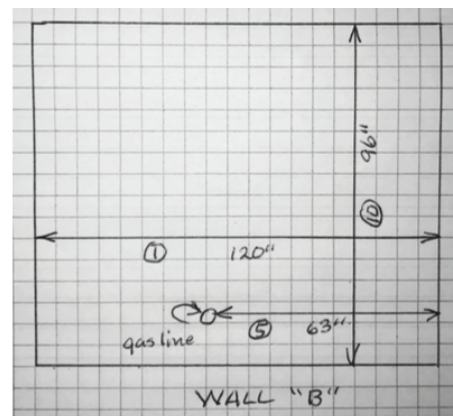
- 7) Measure from floor to window sill bottom trim
- 8) Measure from window sill trim to top of window trim
- 9) Measure from top of window trim to ceiling
- 10) Floor to ceiling should equal total of #7, #8, and #9.

### Measuring Procedure

Using a tape measure and graph paper (page 2 of this form), measure as outlined below.

#### Horizontal measurement

- 1) Measure from wall to wall at 36" height
- 2) Measure from corner to window or door trim
- 3) Measure across opening from trim edge to trim edge
- 4) Measure trim edge to far wall. Compare total of #2, #3, and #4 measurements to #1 measurement. They should equal.
- 5) Mark the exact locations of water, drain, gas lines, and electrical switches and outlets on drawing
- 6) Measure from wall to wall above window and compare



Appliances vary in size. Make sure you have enough room for new or existing appliances to fit. Some Side x Side or French Door refrigerators require more door swing room for pull-out features. Check with appliance supplier for space requirements.